



FOUR SEASONS

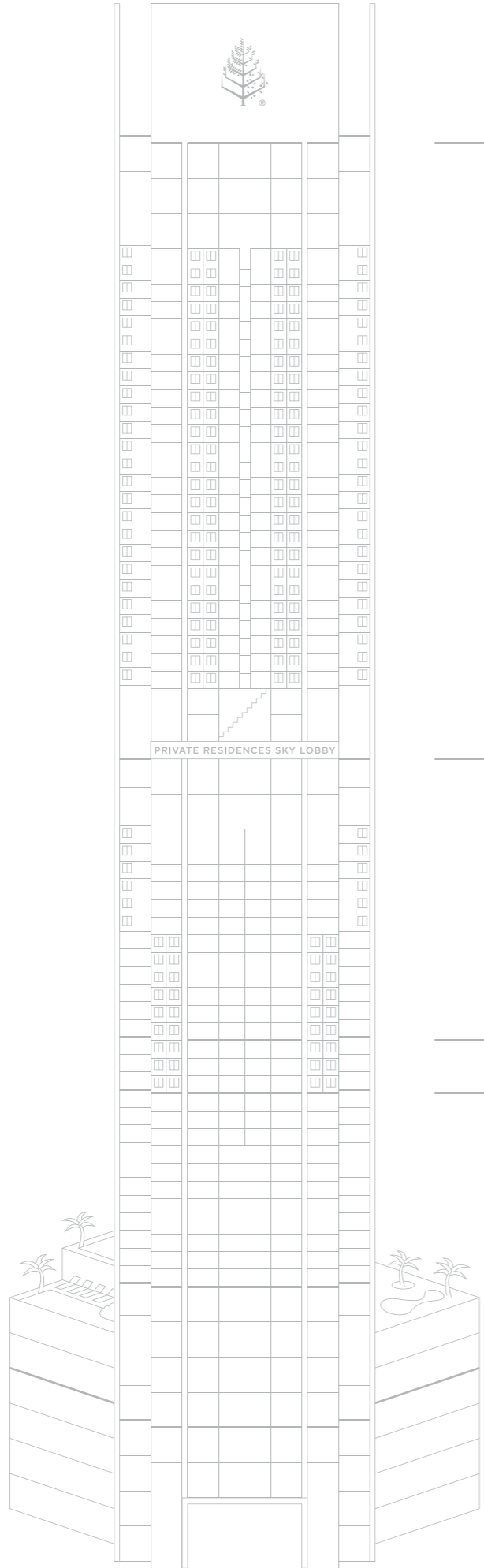
PRIVATE RESIDENCES

KUALA LUMPUR

A DEVELOPMENT OF VENUS ASSETS SDN BHD



UNIT DISTRIBUTION CHART



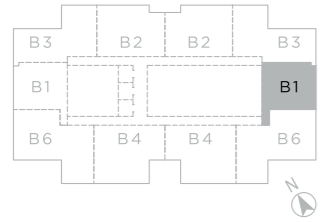
65TH STOREY	PRIVATE RESIDENCES ROOF GARDEN									
64TH STOREY	PH PH01				PH PH02					
62ND - 63RD STOREY	E2 62-1	E1 62-2	E1 62-3	E2 62-3A						
60TH - 61ST STOREY	E2 60-1	E1 60-2	E1 60-3	E2 60-3A						
59TH STOREY	D2 59-1	D1 59-2	D1 59-3	D2 59-3A						
58TH STOREY	D2 58-1	D1 58-2	D1 58-3	D2 58-3A						
57TH STOREY	D2 57-1	D1 57-2	D1 57-3	D2 57-3A						
56TH STOREY	D2 56-1	D1 56-2	D1 56-3	D2 56-3A						
55TH STOREY	D2 55-1	D1 55-2	D1 55-3	D2 55-3A						
54TH STOREY	D2 54-1	D1 54-2	D1 54-3	D2 54-3A						
53RD STOREY	D2 53-1	D1 53-2	D1 53-3	D2 53-3A						
52ND STOREY	D2 52-1	D1 52-2	D1 52-3	D2 52-3A						
51ST STOREY	D2 51-1	D1 51-2	D1 51-3	D2 51-3A						
50TH (B) STOREY	M&E + OUTRIGGER									
50TH (A) STOREY	C3 50-1	C2 50-2	C2 50-3	C3 50-3A	M&E					
49TH STOREY	C3 49-1	C2 49-2	C2 49-3	C3 49-3A	C1 49-5	C1 49-6	C1 49-6	C1 49-6		
48TH STOREY	C3 48-1	C2 48-2	C2 48-3	C3 48-3A	C1 48-5	C1 48-6	C1 48-6	C1 48-6		
47TH STOREY	C3 47-1	C2 47-2	C2 47-3	C3 47-3A	C1 47-5	C1 47-6	C1 47-6	C1 47-6		
46TH STOREY	C3 46-1	C2 46-2	C2 46-3	C3 46-3A	C1 46-5	C1 46-6	C1 46-6	C1 46-6		
45TH STOREY	C3 45-1	C2 45-2	C2 45-3	C3 45-3A	C1 45-5	C1 45-6	C1 45-6	C1 45-6		
44TH STOREY	C3 44-1	C2 44-2	C2 44-3	C3 44-3A	C1 44-5	C1 44-6	C1 44-6	C1 44-6		
43RD STOREY	C3 43-1	C2 43-2	C2 43-3	C3 43-3A	C1 43-5	C1 43-6	C1 43-6	C1 43-6		
42ND STOREY	C3 42-1	C2 42-2	C2 42-3	C3 42-3A	C1 42-5	C1 42-6	C1 42-6	C1 42-6		
41ST STOREY	C3 41-1	C2 41-2	C2 41-3	C3 41-3A	C1 41-5	C1 41-6	C1 41-6	C1 41-6		
40TH STOREY	C3 40-1	C2 40-2	C2 40-3	C3 40-3A	C1 40-5	C1 40-6	C1 40-6	C1 40-6		
39TH STOREY	C3 39-1	C2 39-2	C2 39-3	C3 39-3A	C1 39-5	C1 39-6	C1 39-6	C1 39-6		
38TH STOREY	C3 38-1	C2 38-2	C2 38-3	C3 38-3A	C1 38-5	C1 38-6	C1 38-6	C1 38-6		
37TH STOREY	C3 37-1	C2 37-2	C2 37-3	C3 37-3A	C1 37-5	C1 37-6	C1 37-6	C1 37-6		
36TH STOREY	C3 36-1	C2 36-2	C2 36-3	C3 36-3A	C1 36-5	C1 36-6	C1 36-6	C1 36-6		
35TH STOREY	PRIVATE RESIDENCES SKY LOBBY									
34TH (B) STOREY	M&E + OUTRIGGER									
34TH (A) STOREY	M&E									
33RD STOREY	B7 33-1	B8 33-2	B8 33-3	B7 33-3A	B5 33-5	B2 33-6	B2 33-7	B5 33-8		
32ND STOREY	B7 32-1	B8 32-2	B8 32-3	B7 32-3A	B5 32-5	B2 32-6	B2 32-7	B5 32-8		
31ST STOREY	B7 31-1	B8 31-2	B8 31-3	B7 31-3A	B5 31-5	B2 31-6	B2 31-7	B5 31-8		
30TH STOREY	B7 30-1	B8 30-2	B8 30-3	B7 30-3A	B5 30-5	B2 30-6	B2 30-7	B5 30-8		
29TH STOREY	B7 29-1	B8 29-2	B8 29-3	B7 29-3A	B5 29-5	B2 29-6	B2 29-7	B5 29-8		
28TH STOREY	B7 28-1	B8 28-2	B8 28-3	B7 28-3A	B5 28-5	B2 28-6	B2 28-7	B5 28-8		
27TH STOREY	B1 27-1	B6 27-2	B4 27-3	B4 27-3A	B6 27-5	B1 27-6	B3 27-7	B2 27-8	B2 27-9	B3 27-10
26TH STOREY	B1 26-1	B6 26-2	B4 26-3	B4 26-3A	B6 26-5	B1 26-6	B3 26-7	B2 26-8	B2 26-9	B3 26-10
25TH STOREY	B1 25-1	B6 25-2	B4 25-3	B4 25-3A	B6 25-5	B1 25-6	B3 25-7	B2 25-8	B2 25-9	B3 25-10
24TH STOREY	B1 23A-1	B6 23A-2	B4 23A-3	B4 23A-3A	B6 23A-5	B1 23A-6	B3 23A-7	B2 23A-8	B2 23A-9	B3 23A-10
23RD STOREY	B1 23-1	B6 23-2	B4 23-3	B4 23-3A	B6 23-5	B1 23-6	B3 23-7	B2 23-8	B2 23-9	B3 23-10
22ND STOREY	B1 22-1	B6 22-2	B4 22-3	B4 22-3A	B6 22-5	B1 22-6	B3 22-7	B2 22-8	B2 22-9	B3 22-10
21ST STOREY										
20TH STOREY										
19TH STOREY	HOTEL SERVICED APARTMENT									
18TH STOREY	HOTEL SERVICED APARTMENT + M&E									
17TH STOREY										
16TH STOREY										
15TH STOREY										
14TH STOREY										
13RD STOREY	HOTEL									
12ND STOREY										
11ST STOREY										
10TH STOREY										
9TH STOREY										
8TH STOREY										
7TH (B) STOREY	PRIVATE RESIDENCES COMMON PROPERTY FACILITIES									
7TH (A) STOREY										
6TH (B) STOREY	HOTEL FACILITIES									
6TH (A) STOREY										
5TH (B) STOREY										
5TH (A) STOREY	HOTEL FACILITIES									
4TH (B) STOREY	PRIVATE RESIDENCES CARPARK									
4TH (A) STOREY	RETAIL									
3RD STOREY	RETAIL									
2ND STOREY	RETAIL									
1ST STOREY	RETAIL + DROP OFF + LOADING									
GROUND FLOOR	RETAIL + M&E + LOADING									
BASEMENT 1 / CONCOURSE	RETAIL + M&E + LOADING									
BASEMENT 2										
BASEMENT 3	CARPARK									
BASEMENT 4										

TYPE B1

1-BEDROOM
WITH STUDY

FLOOR AREA
102 SQM | 1,098 SQFT

LEVEL
22-27

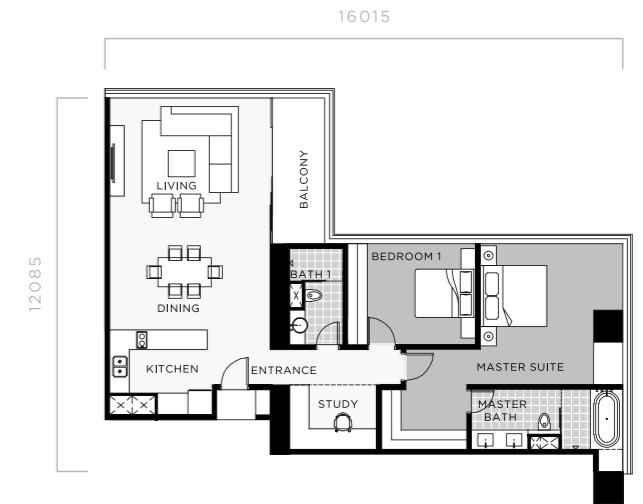
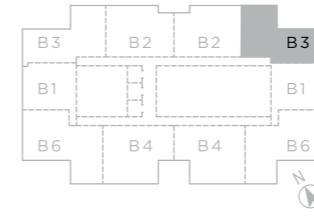


TYPE B3

2-BEDROOM
WITH STUDY

FLOOR AREA
130 SQM | 1,399 SQFT

LEVEL
22-27

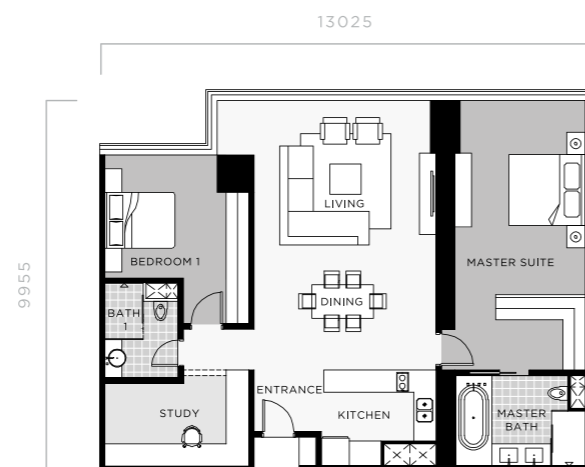
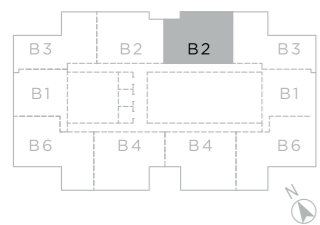


TYPE B2

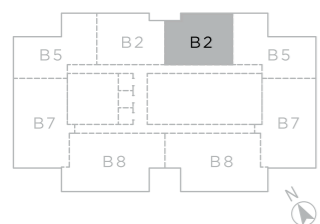
2-BEDROOM
WITH STUDY

FLOOR AREA
125 SQM | 1,345 SQFT

LEVEL
22-27 (10 UNITS/FLOOR)



LEVEL
28-33 (8 UNITS/FLOOR)

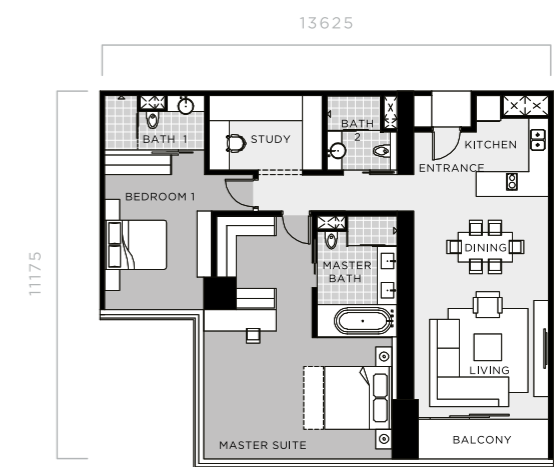
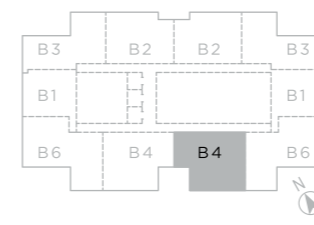


TYPE B4

2-BEDROOM
WITH STUDY

FLOOR AREA
139 SQM | 1,496 SQFT

LEVEL
22-27

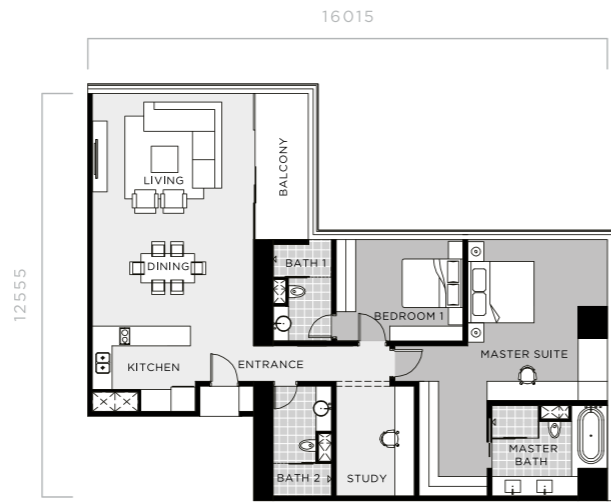
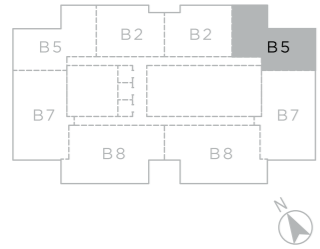


TYPE B5

2-BEDROOM
WITH STUDY

FLOOR AREA
146 SQM | 1,572 SQFT

LEVEL
28-33

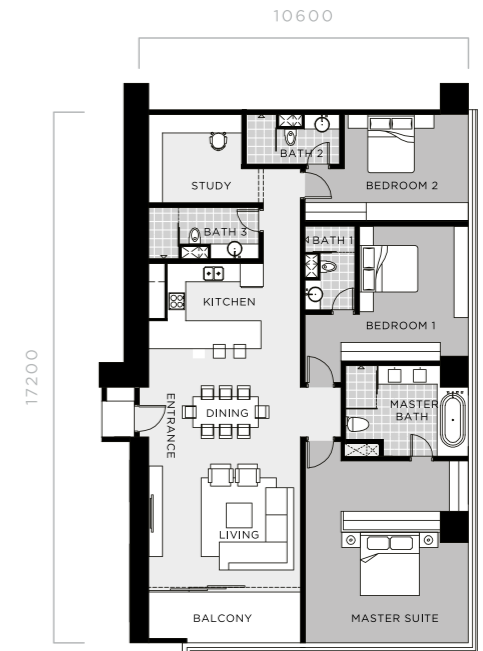
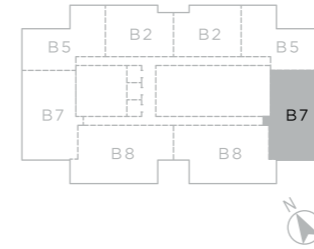


TYPE B7

3-BEDROOM
WITH STUDY

FLOOR AREA
187 SQM | 2,013 SQFT

LEVEL
28-33

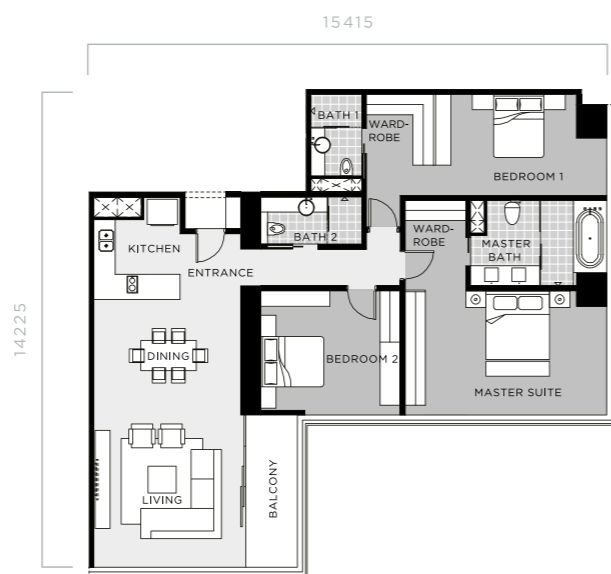
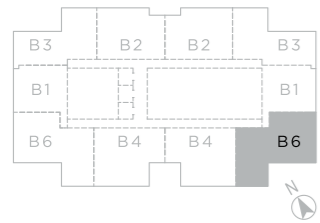


TYPE B6

3-BEDROOM

FLOOR AREA
158 SQM | 1,701 SQFT

LEVEL
22-27

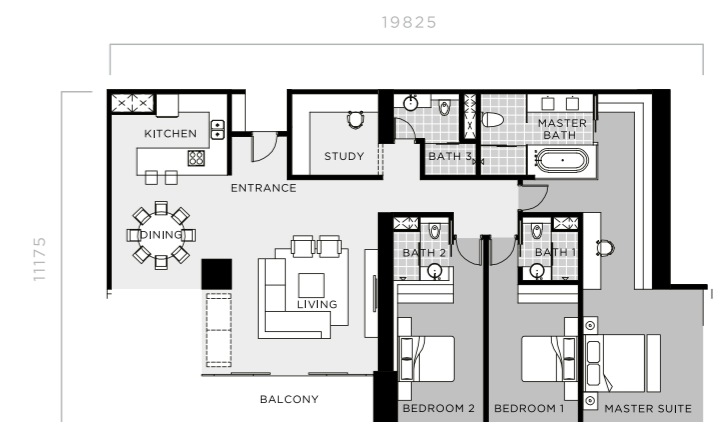
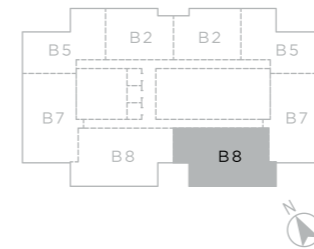


TYPE B8

3-BEDROOM
WITH STUDY

FLOOR AREA
199 SQM | 2,142 SQFT

LEVEL
28-33

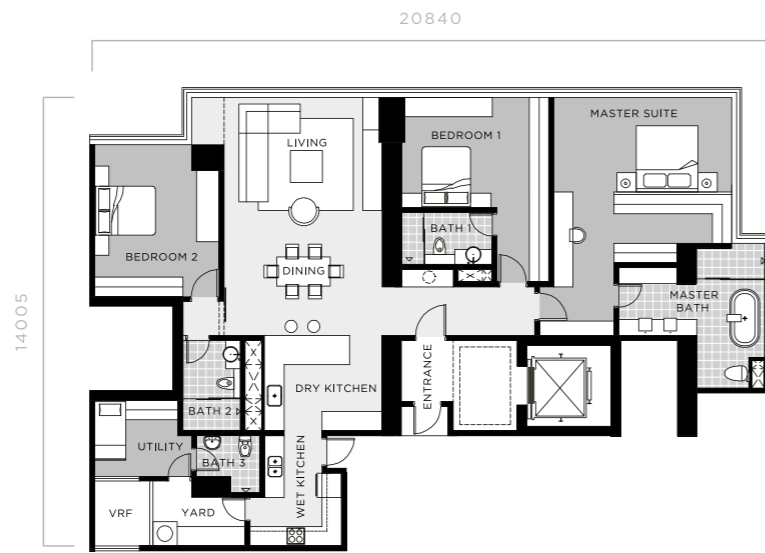
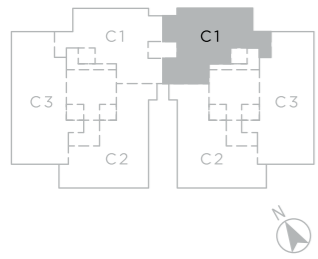


TYPE C1

3-BEDROOM

FLOOR AREA
211 SQM | 2,271 SQFT

LEVEL
36-49

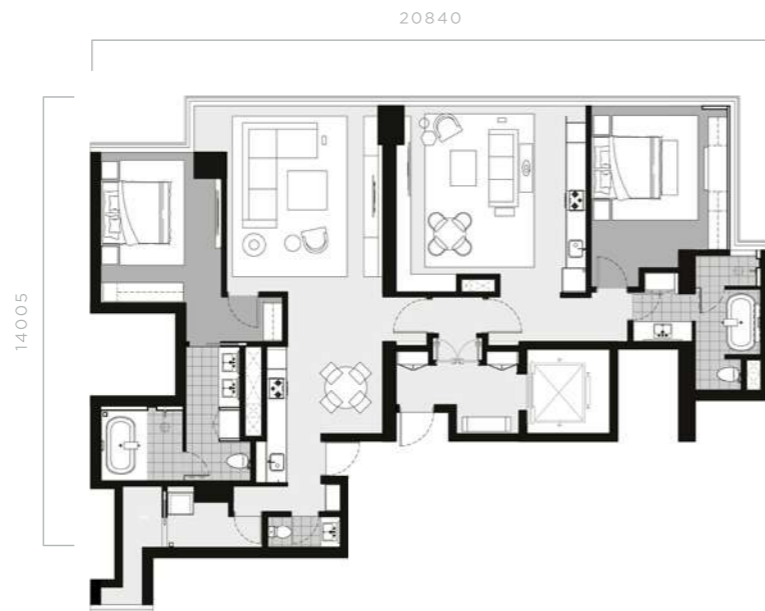
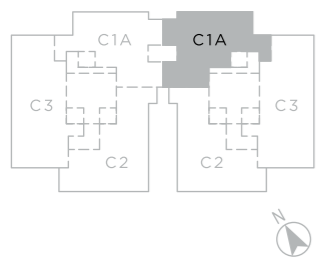


TYPE C1A

2-BEDROOM

FLOOR AREA
211 SQM | 2,271 SQFT

LEVEL
38,42 & 48

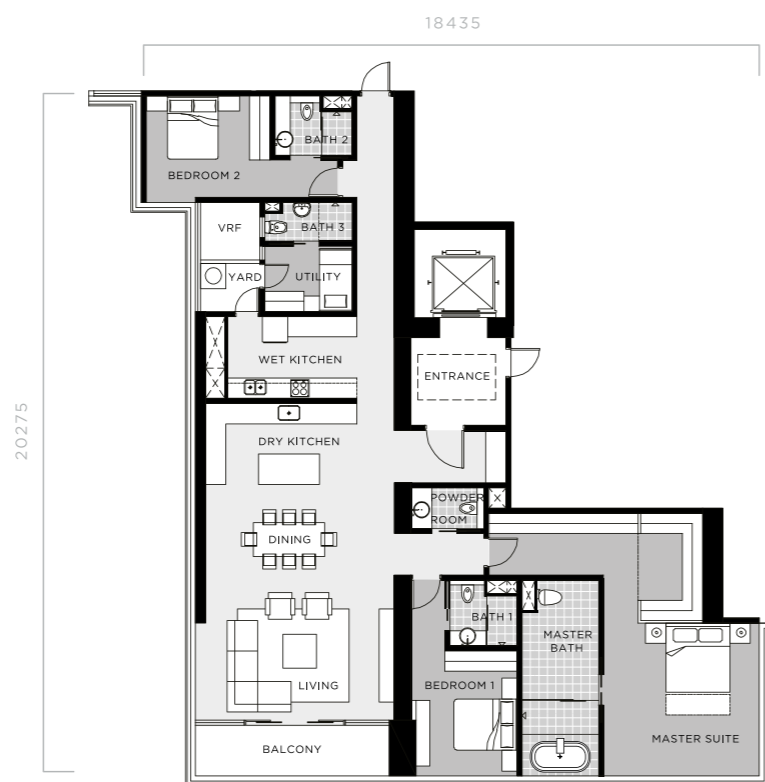
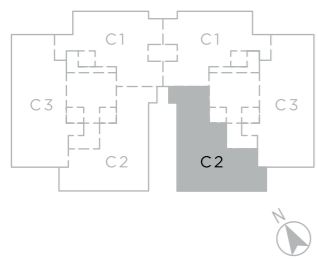


TYPE C2

3-BEDROOM

FLOOR AREA
228 SQM | 2,454 SQFT

LEVEL
36-50

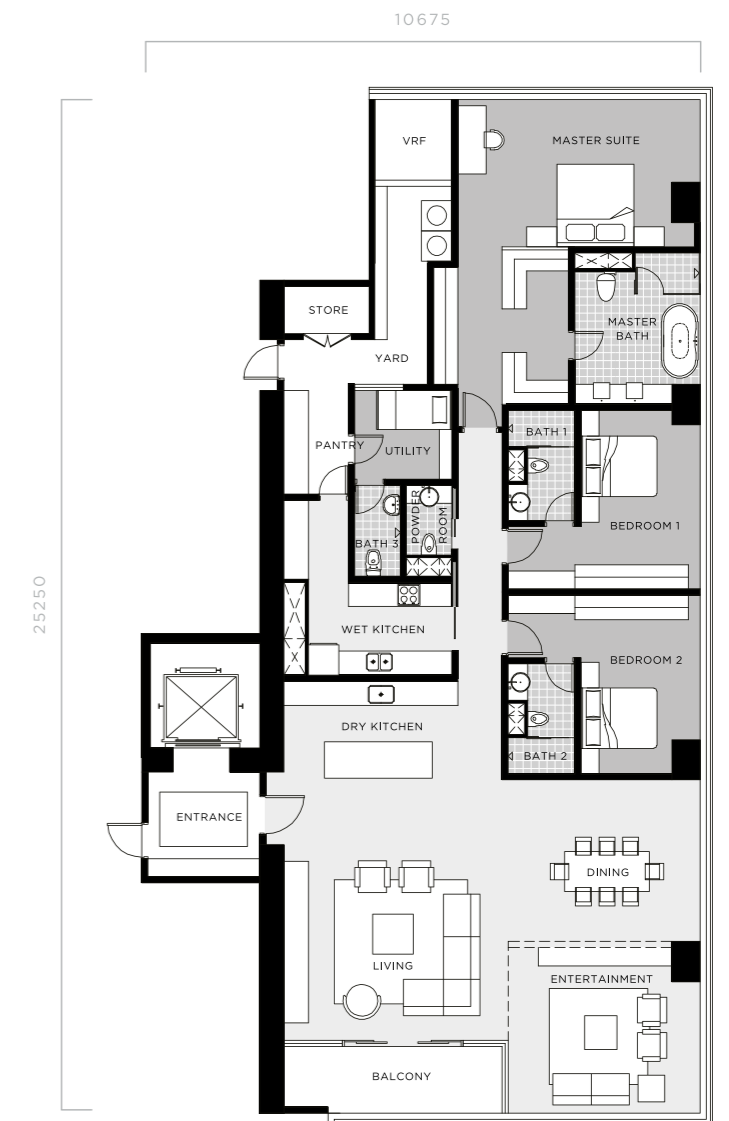
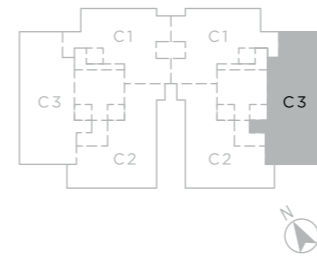


TYPE C3

3-BEDROOM WITH ENTERTAINMENT AREA

FLOOR AREA
268 SQM | 2,885 SQFT

LEVEL
36-50

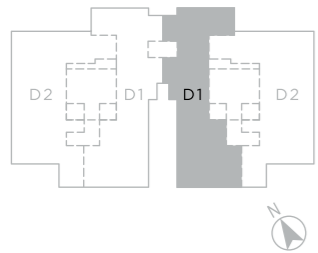
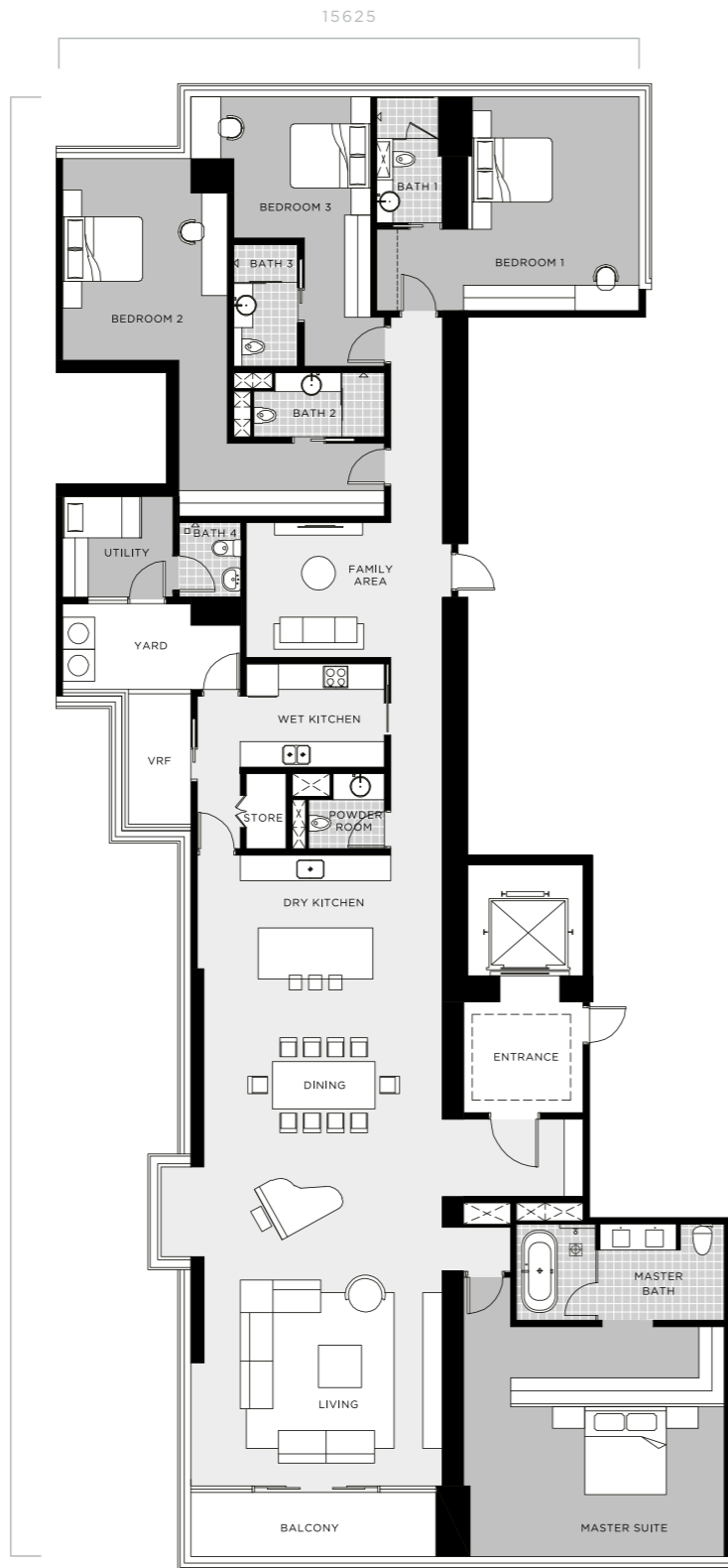


TYPE D1

4-BEDROOM WITH
FAMILY AREA

FLOOR AREA
340 SQM | 3,670 SQFT

LEVEL
51-59

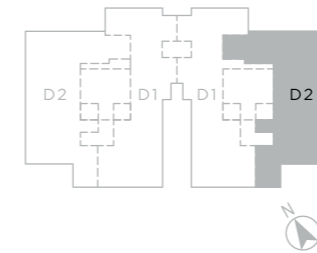
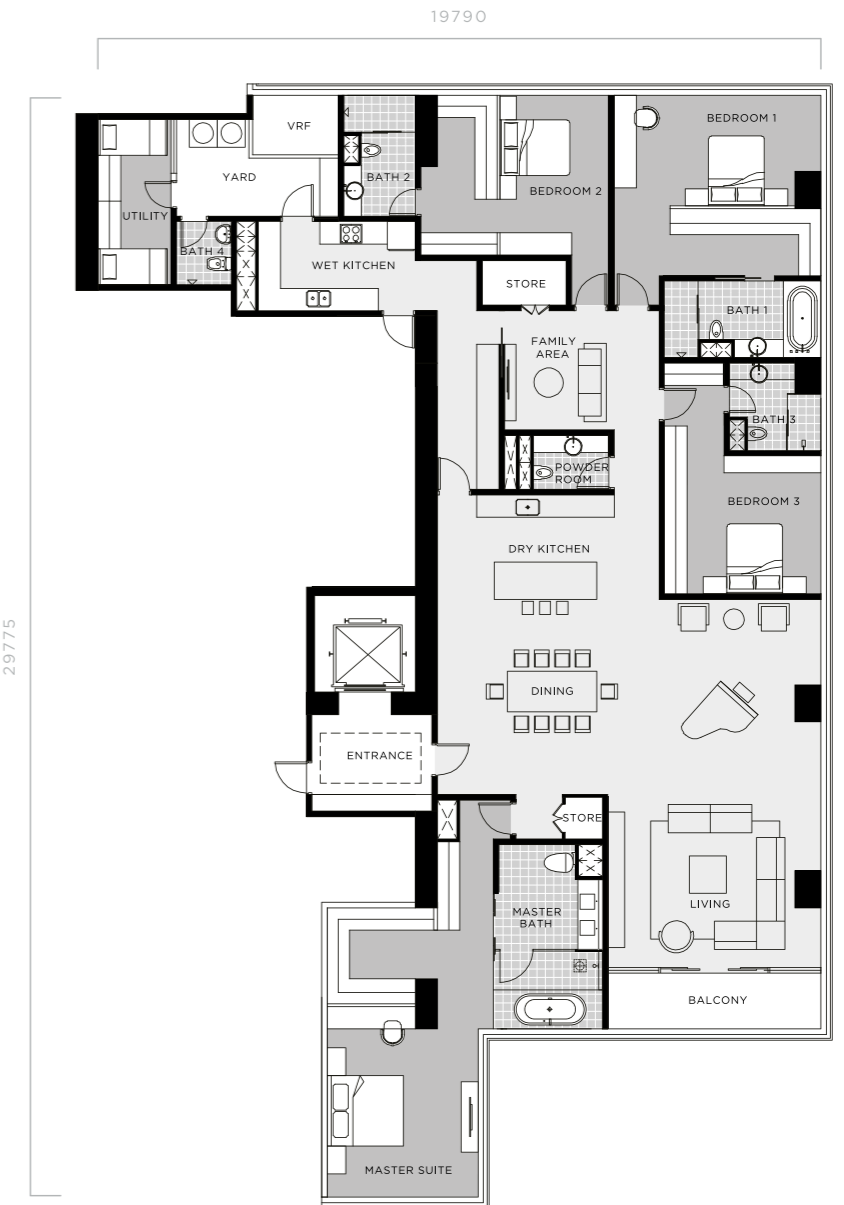


TYPE D2

4-BEDROOM WITH
FAMILY AREA

FLOOR AREA
357 SQM | 3,843 SQFT

LEVEL
51-59

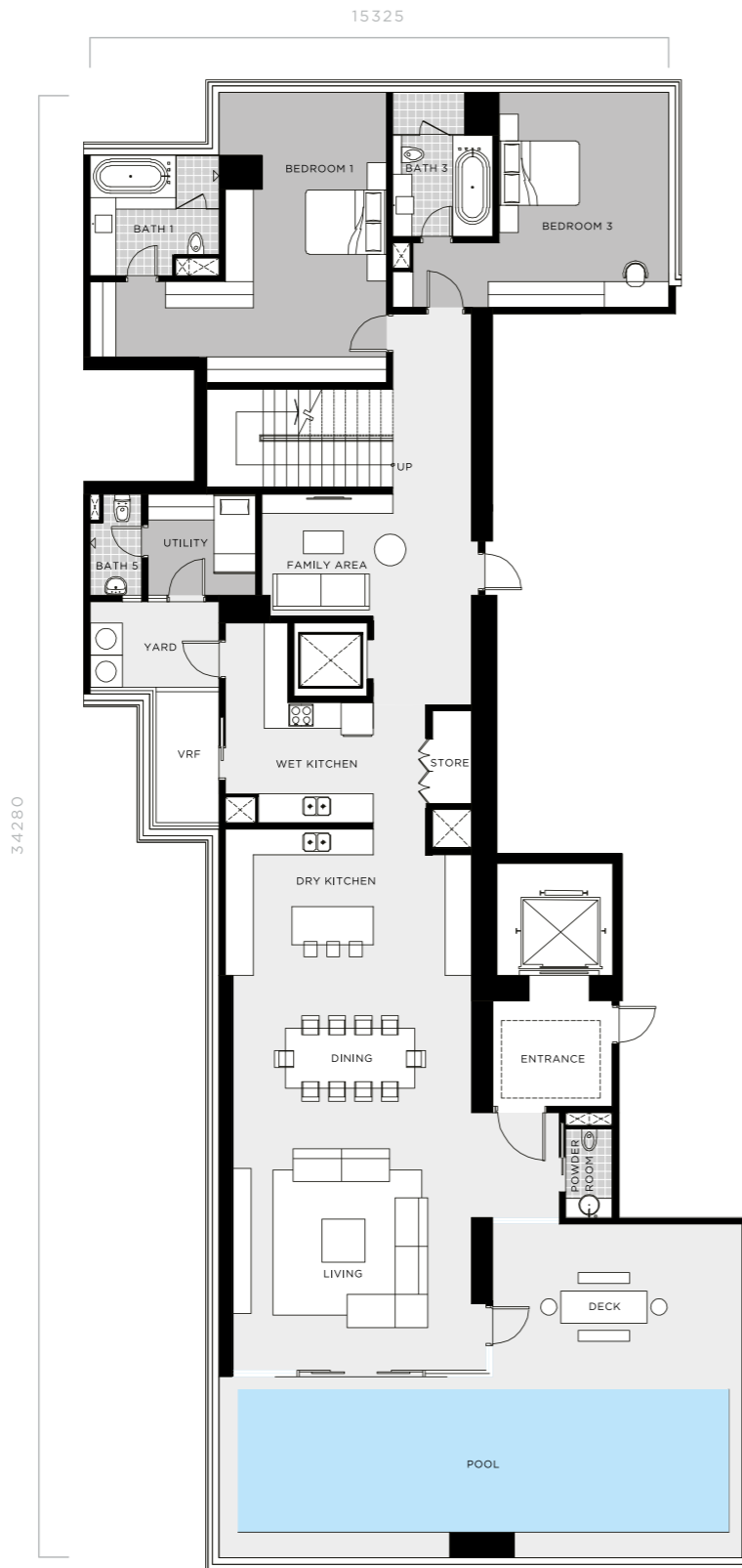


TYPE E1-DUPLEX

5-BEDROOM WITH
FAMILY AREA AND STUDY

FLOOR AREA
337 SQM | 3,627 SQFT

LEVEL
60, 62



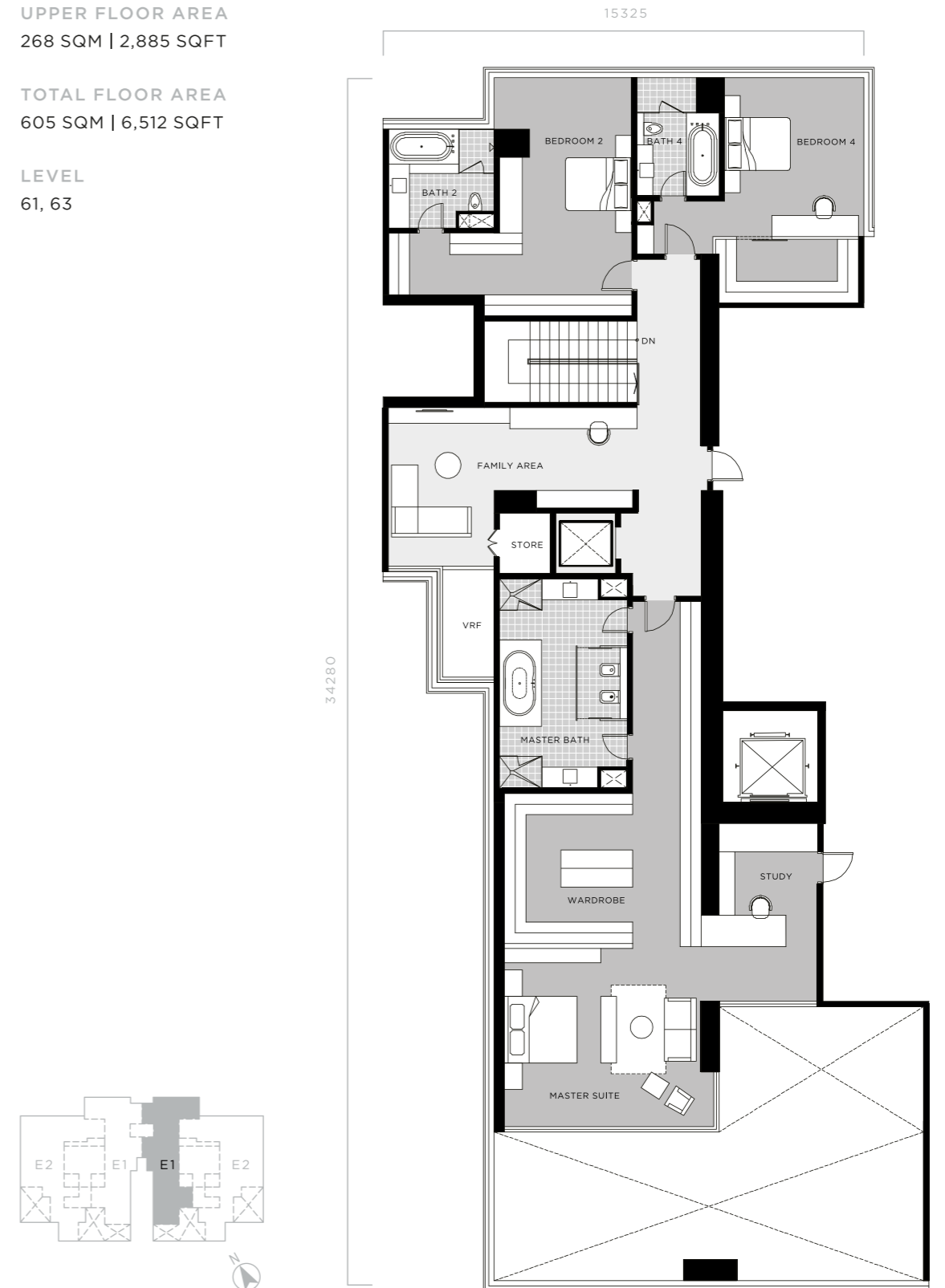
TYPE E1-DUPLEX

5-BEDROOM WITH
FAMILY AREA AND STUDY

UPPER FLOOR AREA
268 SQM | 2,885 SQFT

TOTAL FLOOR AREA
605 SQM | 6,512 SQFT

LEVEL
61, 63

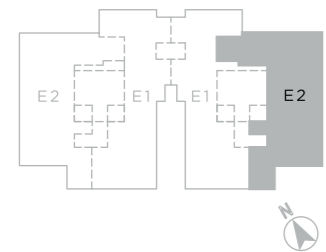
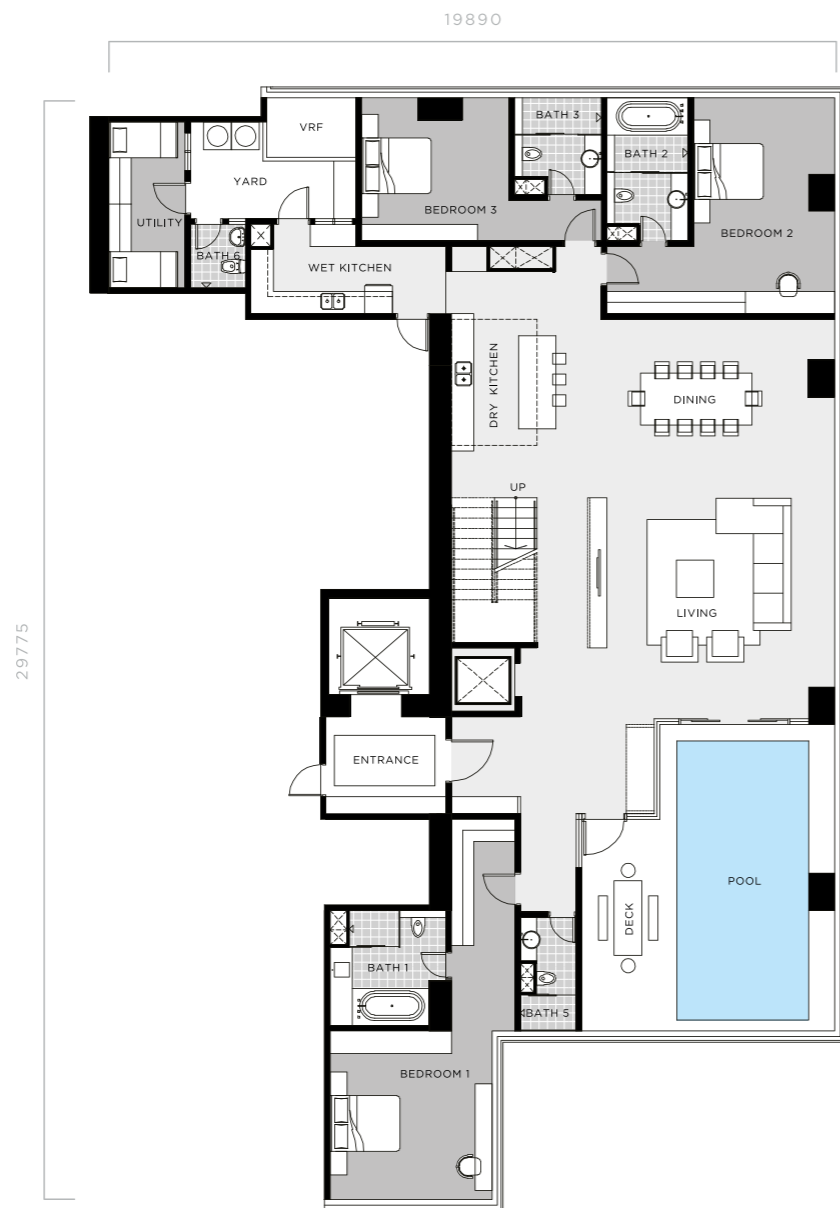


TYPE E2-DUPLEX

5-BEDROOM WITH
FAMILY AREA AND STUDY

FLOOR AREA
359 SQM | 3,864 SQFT

LEVEL
60, 62



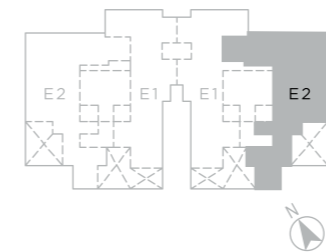
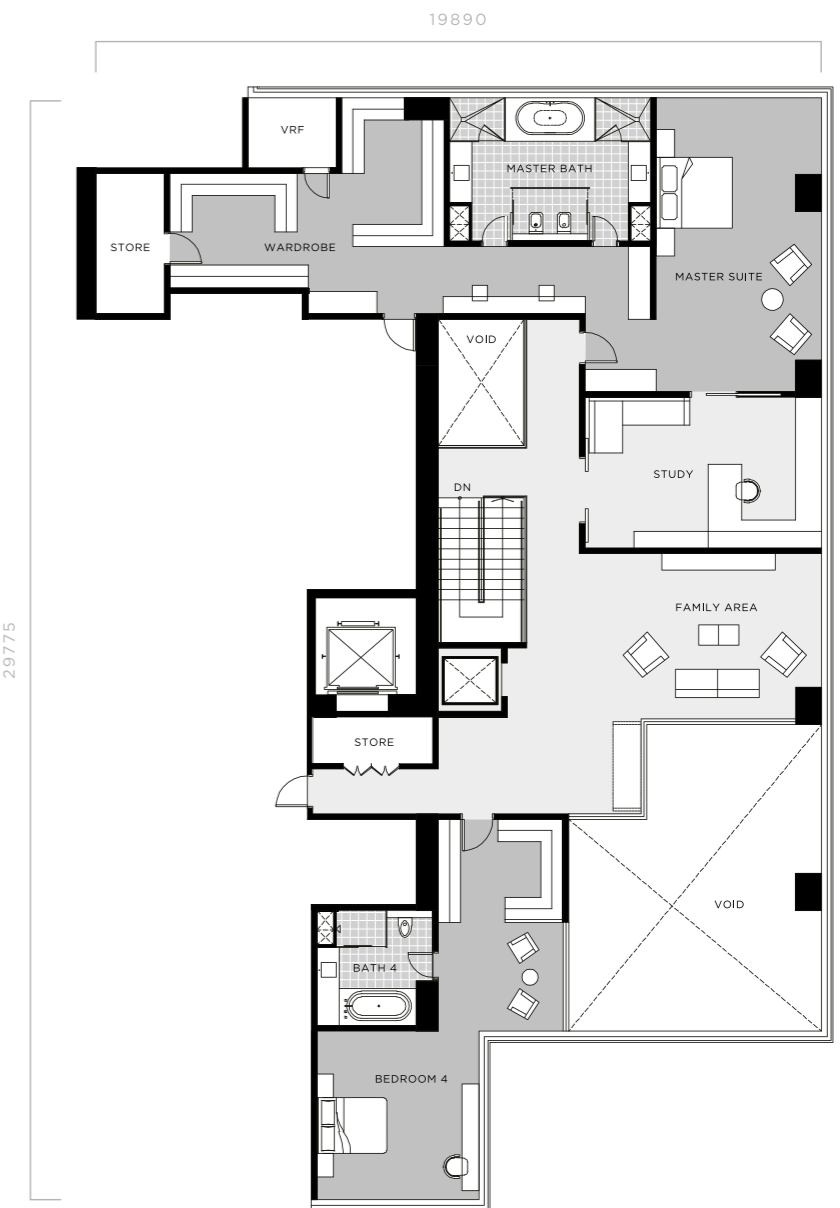
TYPE E2-DUPLEX

5-BEDROOM WITH
FAMILY AREA AND STUDY

UPPER FLOOR AREA
295 SQM | 3,175 SQFT

TOTAL FLOOR AREA
654 SQM | 7,039 SQFT

LEVEL
61, 63



SPECIFICATION

STRUCTURE	REINFORCED CONCRETE
WALLS	AERATED CONCRETE BLOCK / REINFORCED CONCRETE / DRY WALL / BLOCK WALL / PRECAST WALL
ROOF COVERING	REINFORCED CONCRETE SLAB
CEILING	FIBROUS PLASTER BOARD / SKIM COAT
WINDOWS	DOUBLE GLAZED GLASS PANELS, POWDER COATED ALUMINIUM FRAMES
DOORS	
MAIN ENTRANCE	SOLID TIMBER FIRE-RATED DOOR
OTHERS	SOLID TIMBER FIRE-RATED DOOR, TIMBER DOOR, SLIDING DOOR, POWDER COATED ALUMINIUM FRAME GLAZE SLIDING DOOR
FLOOR FINISHES	
PRIVATE LIFT LOBBY, DINING, DRY KITCHEN, FAMILY, ENTERTAINMENT ROOM & STUDY	IMPORTED STONE / TIMBER STRIP FLOORING
MASTER BATH & POWDER ROOM	IMPORTED STONE / SELECTED TILES
BEDROOMS	TIMBER STRIP FLOORING
OTHER BATHROOMS, WET KITCHEN, BALCONY, YARD, UTILITY	IMPORTED STONE / SELECTED TILES
WALL FINISHES	
GENERAL	CEMENT SAND PLASTER AND/ OR SKIM COAT WITH EMULSION PAINT
MASTER BATH & POWDER ROOM	IMPORTED STONE
WET KITCHEN, OTHER BATHS	SELECTED TILES
IRONMONGERY	QUALITY LOCKSETS
SANITARY AND PLUMBING FITTINGS	QUALITY SANITARY WARES AND FITTINGS
TELEPHONE & INTERCOM	TELEPHONE POINTS AND INTERCOM SYSTEM
AIR CONDITIONING	AIR-CONDITIONING TO LIVING, DINING AND ALL BEDROOMS WHERE APPLICABLE TO STUDY, ENTERTAINMENT AND FAMILY AREA
HOT WATER PROVISIONS	ALL BATHROOMS, KITCHEN AND POWDER ROOM
GAS	NATURAL GAS SYSTEM

ELECTRICAL INSTALLATIONS	UNIT TYPE															
	B1	B2	B3	B4	B5	B6	B7	B8	C1	C2	C3	D1	D2	E1	E2	
DESCRIPTION																
LIGHTING POINT	28	31	32	36	39	39	45	51	64	64	67	80	91	112	124	
POWER POINT	45	51	54	59	60	63	70	73	74	78	86	100	110	140	137	
TELEPHONE & DATA POINT	6	8	8	8	8	8	8	8	8	8	10	12	13	17	17	

T : +6019 982 5085
E : ENQUIRY@VENUSASSETS.COM
W : WWW.VENUSASSETS.COM

NOTE:
* POWER POINTS SHALL INCLUDE A/C POINT.
* LIGHTING POINTS SHALL INCLUDE FAN POINT AND ID LIGHTING POINT.

All information and specifications, renderings, visual representations and floorplans in this brochure are correct at the time of publication and are subject to change and deviations as may be required by us and/or the competent authorities and shall not form part of any offer or contract nor constitute any warranty by us and shall not be regarded as statements or representation of fact.

Four Seasons Place Kuala Lumpur and Four Seasons Private Residences Kuala Lumpur are not owned, developed or sold by Four Seasons Hotels Limited or its affiliates (Four Seasons). The developer, Venus Assets Sdn. Bhd., uses the Four Seasons trademarks and tradenames under a license from Four Seasons Hotels and Resorts Asia Pacific Pte Ltd. The marks "FOUR SEASONS," "FOUR SEASONS HOTELS AND RESORTS," any combination thereof and the Tree Design are registered trademarks of Four Seasons Hotels Limited in Canada and U.S.A. and of Four Seasons Hotels (Barbados) Ltd. elsewhere.

